

[www.acteongroup.com](http://www.acteongroup.com)

# IT'S TIME FOR EFFICIENT PANORAMIC X-RAYS

X MIND  
*prime*



X-Mind® prime is manufactured by Villa Sistemi Medicali and distributed by ACTEON.

ACTEON NORTH AMERICA  
124 Gaither Drive Suite 140, Mount Laurel, NJ 08054  
Phone 800-289-6367 | Fax 856-222-4726  
Email: [info@acteonusa.com](mailto:info@acteonusa.com) | [www.acteongroup.com/us](http://www.acteongroup.com/us)

Non contractual document - Ref. 707212.A - 4/24/19 - Copyright © 2019 ACTEON. All rights reserved. No information or any part of this document may be reproduced or transmitted in any form without the prior permission of ACTEON.

# 2D DIAGNOSIS IS MORE ACCESSIBLE THAN EVER WITH A SMART & COMPACT SOLUTION



ACTEON

## INNOVATIVE IMAGING

**X-MIND® PRIME**  
is a smart solution, providing  
high-technology capabilities  
and simplicity of use.

**This ingenious unit** offers  
all essential diagnostic tools  
in a cost effective package.

Easy  
2D diagnosis

Easy  
positioning

Easy  
user interface

Easy  
installation

Easy  
training





# PROVIDE A COMPREHENSIVE CLINICAL OVERVIEW WITH AIS

## FOLLOW-UP YOUR TREATMENT AND EFFECTIVELY COMMUNICATE WITH YOUR PATIENT



*Interproximal caries on 9 and 10. Endodontic treatment and apical lesion on 31*

- Accurate panoramic examinations
- Improved communication with your patients
- Minimum time for exam preparation
- Excellent image quality



*Verify the implant positioning right after the surgery*



*Wisdom teeth positioning*



*Check the endodontic treatment performed on 31*



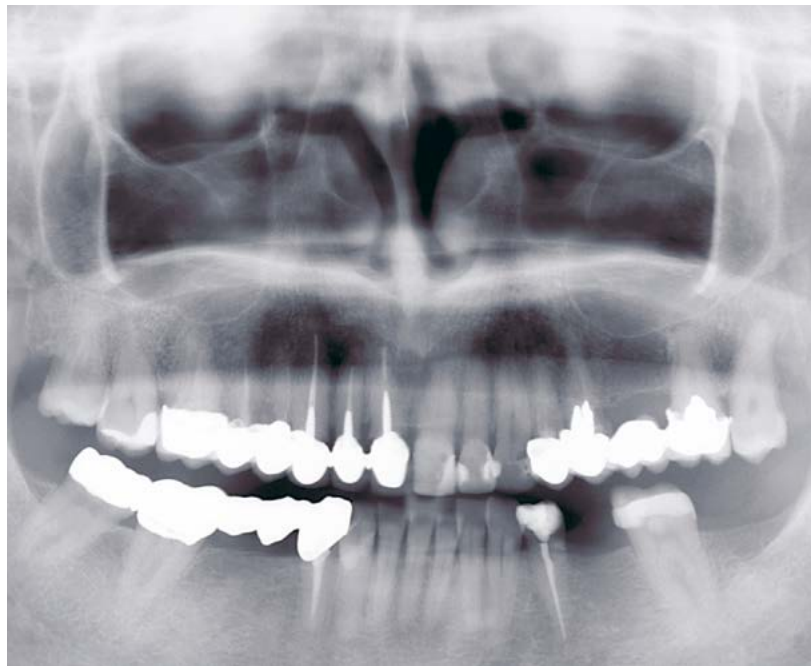
# RELY ON AN EXTENSIVE SELECTION OF PANORAMIC EXAMS

X-Mind® prime offers a full set of panoramic exams tailored to meet all your clinical applications. It provides all the panoramic exams required for general dentistry: dental panoramic, temporomandibular joints, and sinuses.



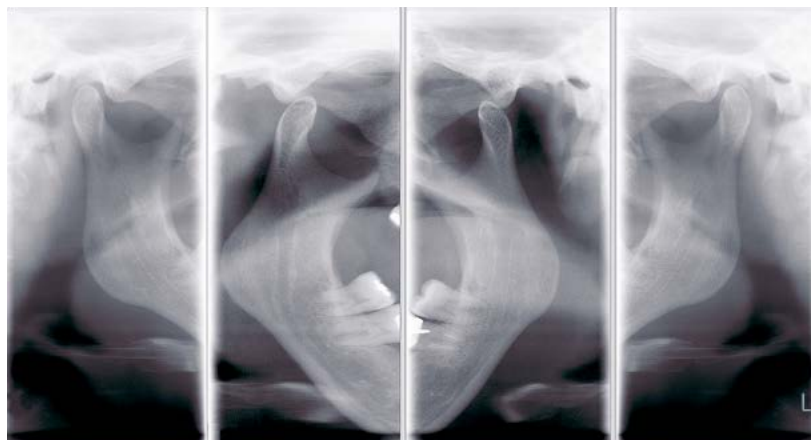
## DENTAL PANORAMIC

Complete overview of the mandible and maxilla, maxillary sinuses, temporomandibular joints and supporting structures.



## MAXILLARY SINUSES

Raised image in order to increase the visibility of the sinus and the apices of the upper teeth.



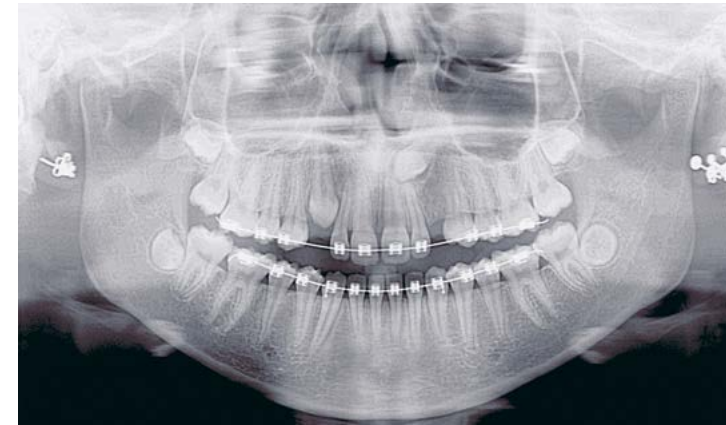
## TEMPOROMANDIBULAR JOINT

Examination can be carried out with the mouth either open or closed.

## MULTIPLE ADULT AND CHILD PANORAMIC

- ▶ Panoramic Standard
- ▶ Half Panoramic (right/left)
- ▶ Frontal Dentition
- ▶ Low Dose
- ▶ Ortho Rad
- ▶ Bitewing Single (right/left)
- ▶ Bilateral
- ▶ Sinus
- ▶ TMJ Standard
- ▶ Single phase

Other specific programs are available such as half-panoramic, improved orthogonal panoramic, detailed frontal dentition, low-dose panoramic and bitewing.



## CHILD PANORAMIC

Protect your patient by reducing the exposed area and time.



## HALF-PANORAMIC

Left & Right

Reduce the exposed area and focus on the region of interest.



## BITEWING

Left & Right

Single or bilateral bitewing views.



## FRONTAL

Limit the exposure to the front of the arches only.



# EASILY AND EFFICIENTLY POSITION YOUR PATIENT

To maximize productivity, X-Mind® prime is specifically designed to reduce the patient preparation time.

## SMOOTH PATIENT POSITIONING

Natural face-to-face positioning supported by alignment lasers for correct patient positioning.



Whether sitting or standing at any height, the telescopic columns can be directly adjusted using the control panel.

**X-Mind prime's open space configuration suits all types of patients and is easily accessible for wheelchair users with its zero footprint space.**



## SIMPLE CONTROL PANEL

The intuitive control panel smartly located below the chin support provides streamlined and precise patient positioning. Simple settings and a quick examination lead to a more productive patient workflow.



Error-free patient positioning with automated chin rest support recognition.





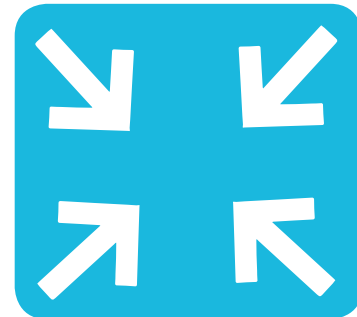
# OPTIMIZE THE SPACE WITHIN YOUR PRACTICE

## INTELLIGENT WALL MOUNTED SOLUTION



### COMPACTNESS IS KEY.

X-Mind® prime is a space-saving device. With its smart wall-mounted system, it will never get in your way.



Its exceptional light weight (only 137 lbs) and its reduced size makes X-Mind® prime adaptable. It will fit the narrowest space.

WITH ZERO FOOTPRINT, X-MIND® PRIME WILL NOT REDUCE PRECIOUS WORKSPACE WITHIN YOUR PRACTICE.



# COMPLETE YOUR DIAGNOSIS & TREATMENT PLANNING WITH SPEED & EFFICIENCY

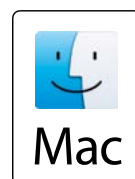
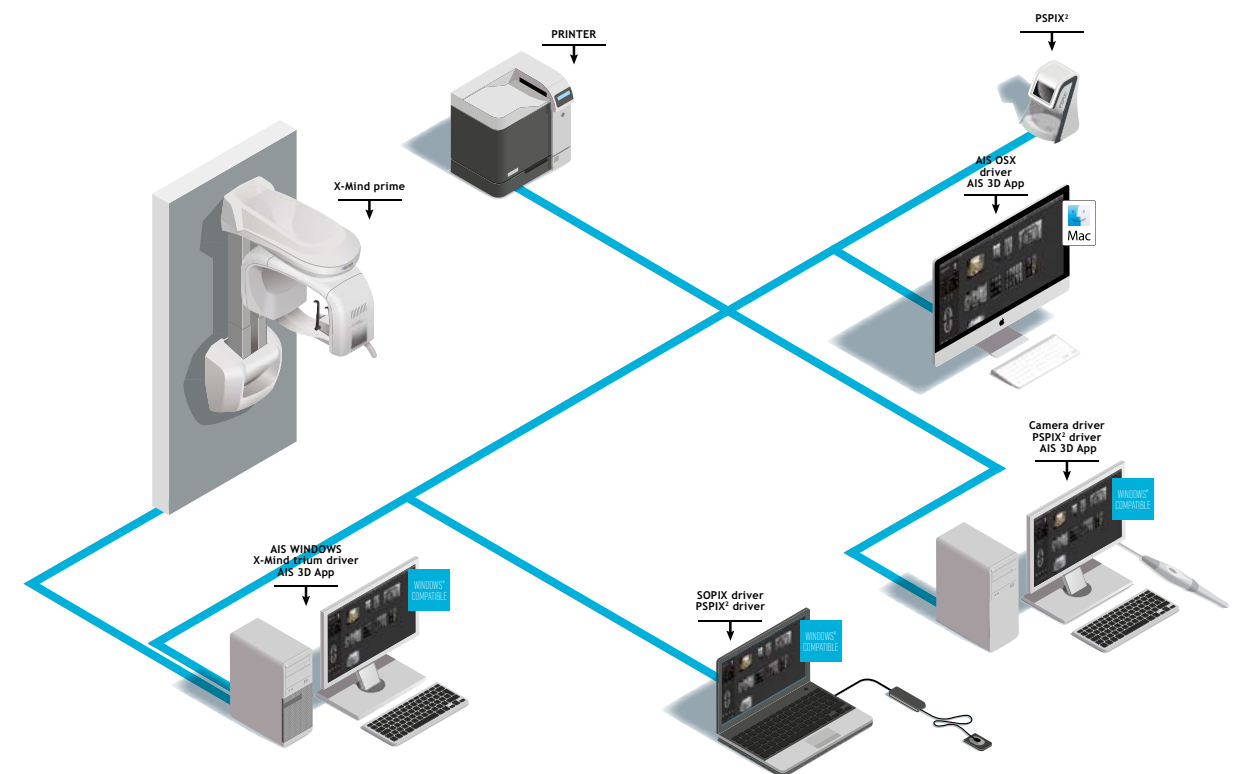
OPTIMIZE YOUR DIAGNOSIS  
TIME WITH POWERFUL, INTUITIVE  
AND HIGH-PRECISION SOFTWARE



## ADVANCED FUNCTIONALITY FOR INTUITIVE NAVIGATION

AIS software allows you to manage panoramic images from acquisition to viewing.

- ▶ Distance and angle measurement
- ▶ Custom patient report
- ▶ Superior design
- ▶ Clean lines
- ▶ User-friendly
- ▶ Open architecture
- ▶ Seamless integration with ACTEON 2D and 3D imaging devices
- ▶ Panoramic image detail optimization filter
- ▶ Integrates with various patient management software

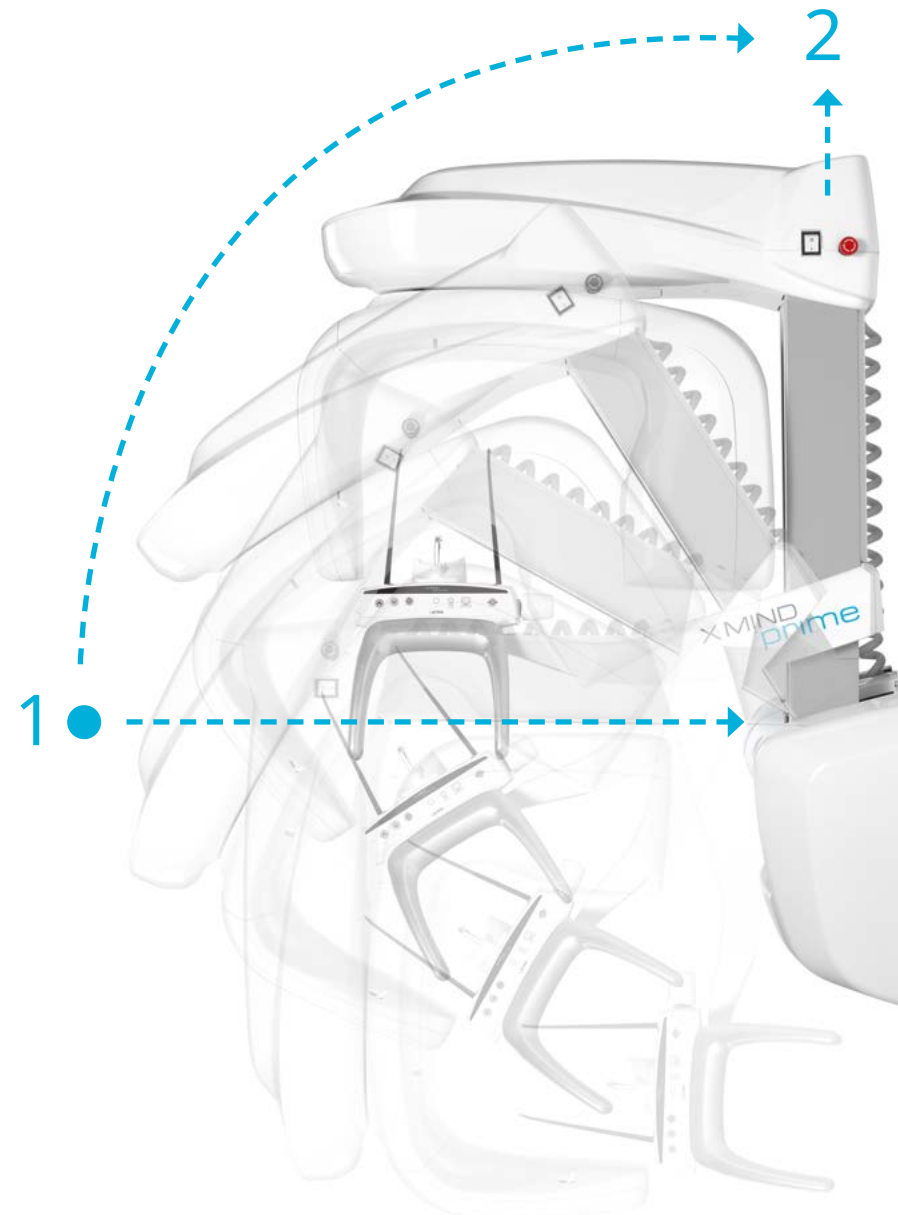
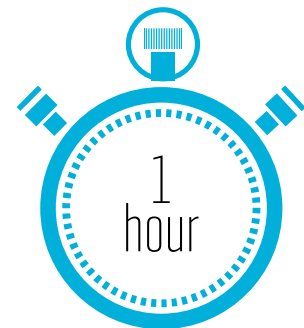


# UNMATCHED INSTALLATION SPEED

X-Mind® prime is ready to install! Delivered completely assembled at your practice, you are all set-up in only one hour.

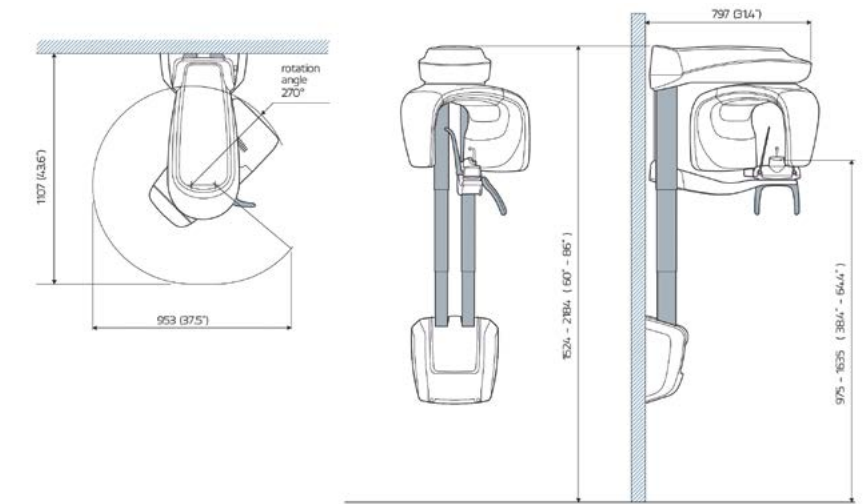
**As simple as one box, one technician, two steps and that's it!**

It does not interrupt the daily work and operations of the office, helping you to save time.



## TECHNICAL SPECIFICATIONS

X MIND  
prime



X-Mind® prime 2D	
<b>X-RAY SOURCES</b>	
<b>Tube type</b>	D-058 (Toshiba)
<b>Total filtration</b>	2.0 mm Al eq. @ 70kVp
<b>Tube voltage</b>	60 - 70 kV
<b>Anodic current</b>	2-7.1 mA
<b>Focal spot</b>	0.5 mm
<b>SENSOR</b>	
<b>Type</b>	CCD
<b>Pixel size</b>	48 µm
<b>ACQUISITION</b>	
<b>PAN Programs</b>	Panoramic (adult/child) - TMJ open/closed mouth in lateral projection - Maxillary sinuses (P-A) - Half panoramic (left/right) - Low dose panoramic - Frontal dentition - Ortho Rad Panoramic - Bitewing (left/right/double)
<b>Exposure time</b>	up to 14.4 sec
<b>Grey levels</b>	4096 - 12 bits
<b>MECHANICAL DATAS</b>	
<b>Footprint</b>	43.6" x 37.5"
<b>Height</b>	Max 86.2 inches
<b>Weight</b>	137 lbs
<b>IEC</b>	
<b>Class &amp; Type</b>	Class I with type B applied parts according to IEC 60601-1 classification

	WORKSTATION MINIMUM REQUIREMENTS		
	PAN/CEPH WINDOWS (WORKSTATION)	CLIENT WINDOWS	CLIENT MAC OS
<b>Processor</b>	Intel i5	Intel i5	Quadcore 2.6 GHz
<b>Hard Disk</b>	1TB 7200 rpm	300 GB	300 GB
<b>RAM</b>	8 GB	4 GB or 8 GB (for big FOV DICOM stacks)	4 GB or 8 GB (for big FOV DICOM stacks)
<b>Graphics card</b>	OPEN GL 2.1 compatible (suggested an NVIDIA GT/GTX)	Nvidia Geforce or Nvidia Quadro with 1 GB dedicated RAM	Nvidia Geforce or Nvidia Quadro with 1 GB dedicated RAM
<b>Screen resolution</b>	1600 x 1024	1600 x 1024	1600 x 1024
<b>Network card</b>	INTEL CT 1000 pro	100 Mb for PAN/CEPH 1 Gb for CBCT	100 Mb for PAN/CEPH 1 Gb for CBCT
<b>Operating system</b>	Windows 7 Professional 64 bits	Windows 7 64 bits	OS X Sierra (10.12)

ACTEON SERVICE  
& YOU

Imaging Specialists are available to show you the clinical aspects and patient benefits of ACTEON® products.

Free, ongoing and unlimited technical service can be reached Monday to Friday during normal business hours.

X-Mind® prime is manufactured by Villa Sistemi Medicali and distributed by ACTEON.