

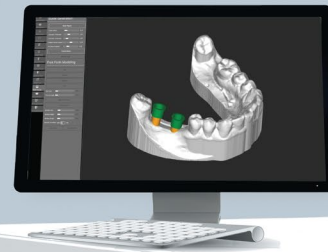
# ***ELEVATE YOUR DENTAL IMPLANT SUCCESS***

WITH ACTEON SOLUTIONS



**USING THE RIGHT TOOLS IN 3 EASY STEPS  
CAN ELEVATE YOUR SUCCESS EXPONENTIALLY**

# IMPLANT SUCCESS SOLUTION



## SCAN

Acquire 3D digital image of your patient with the X-MIND Prime CBCT.



## PLAN

ACTEON Imaging Suite (AIS) is powerful design software that provides intuitive controls and flexibility.



## PREP

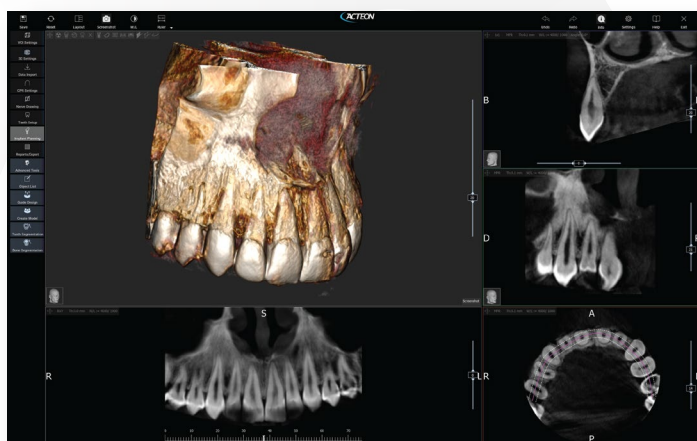
CUBE lays the foundation for successful implant placement with bone grafts, yielding reduced trauma and increased bone preservation.

# ELEVATE YOUR DENTAL IMPLANT SUCCESS

# SCAN



Acquire 3D digital image of your patient with the X-MIND Prime CBCT.



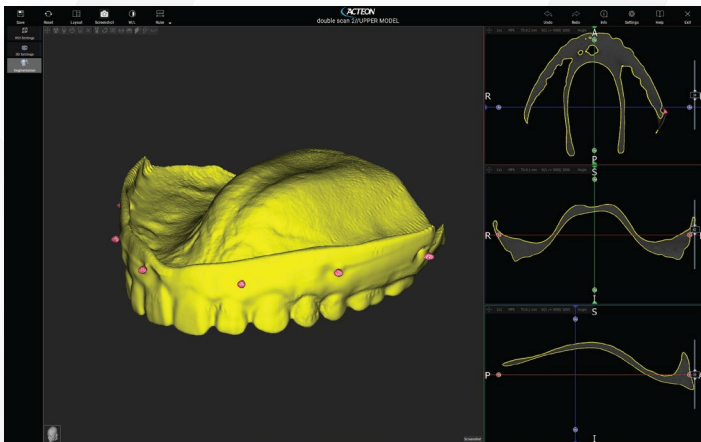
Increase your diagnostic abilities with sharp, detailed three-dimensional imaging. Maximize your investment with skilled ACTEON training and support teams.



# ELEVATE YOUR DENTAL IMPLANT SUCCESS

## PLAN

ACTEON Imaging Suite (AIS) is powerful design software that provides intuitive controls and flexibility. Its user-friendly interface is easy to learn and offers advanced tools to match the needs of more experienced users.



Import your digital impression or scan a model using X-MIND Prime.



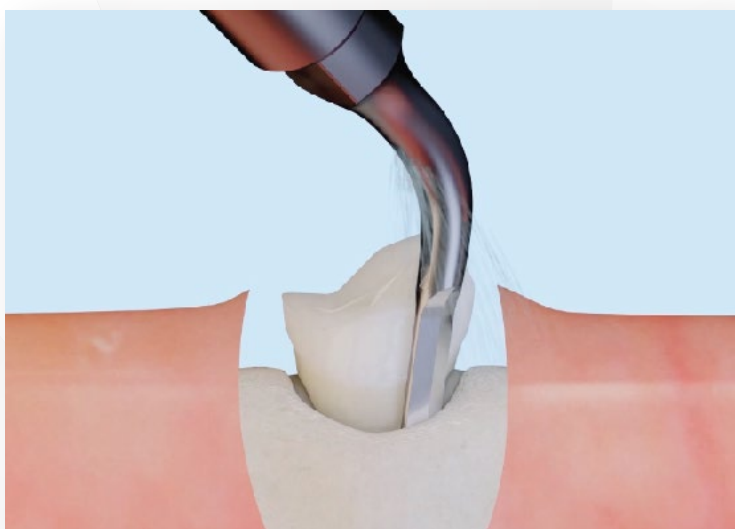
Use a Cloud-based implant library to select your chosen implant system and plan around the exact implant. Design a custom Surgical Guide quickly and efficiently using available sleeves and your mill or 3D printer.



# ELEVATE YOUR DENTAL IMPLANT SUCCESS

## PREP

Reduce your risk, increase your predictability. Over 50% of dental implants need implant surgery prior to implant placement.



Piezotome CUBE provides safe, powerful ultrasonic bone surgery for a variety of procedures such as atraumatic extractions, sinus elevation, and ridge splitting.



3